

ecue

L I G H T I N G C O N T R O L

PRODUCT BROCHURE

© e:cue lighting control
An OSRAM Company
www.ecue.com

SOFTWARE

CREATE, ORCHESTRATE, DESIGN, CUSTOMIZE, PROGRAM, ORGANIZE, PLAN, OUTLINE, SETUP



KEY FEATURES

FLEXIBILITY

- > Control large numbers of DMX/RDM channels
- > Import video content
- > Use scripting language for advanced custom solutions
- > Integrate Input/Output signal for external triggering
- > Use two media players for simultaneous video/audio playback
- > Orchestrate sound-to-light using Audio DSP

ACTION PAD

Use any touch screen monitor for user interaction – LAS includes a special tool to easily design custom graphical user interfaces featuring custom pictures, buttons and faders with various colors, shapes, and patterns.

Standard Version:

Free download at www.ecue.com. This is the most basic version of the LAS.

Elements Version:

Includes a licensed USB dongle and multimedia functions; enables users to export light scenes to the e:cue Butler and Butler XT and allows integration of one external device via MIDI, RS232, or SMPTE Time code.

Enterprise Version:

Contains all functions of the Elements Version, including a licensed USB dongle; allows integration of up to five external devices, Automation and Sunrise Timer, and output to one Art-Net/KiNET universe.

LCE Version:

Pre-installed and available only with the Lighting Control Engine (LCE) Series. Enables integration of 99 external devices. Art-Net/KiNET upgrades are only available with the LCE. Upgrades can be expanded in steps, enabling simultaneous control of DMX/RDM fixtures and Art-Net/KiNET-driven fixtures.

THE e:cue LIGHTING APPLICATION SUITE (LAS) VERSIONS

Features	Standard Version	Elements Version	Enterprise Version	LCE Version
Automation	-	-	✓	✓
Audio DSP	-	✓	✓	✓
Sunrise Timer	-	-	✓	✓
SMPTE Time Code	-	✓	✓	✓
Integrated Media Player (AVI, MP3; etc.)	-	✓	✓	✓
Number of possible connections to external devices (remote media player, RS232, Midi, 3D Visualizers like e:cue imagine, peer connections, Kiss Box, Moxa or WUT I/Os, Panasonic PJ Link, HTTP-Server)	0	1	5	99
Art-Net/KiNET output	0	0	1	1
Butler or Butler XT upload	-	✓	✓	✓

LIGHTING APPLICATION SUITE

The e:cue Lighting Application Suite (LAS) is a collection of software applications used to program the most creative lighting designs. The LAS includes innovative and intuitive software tools that allow the user to design from simple to complex lighting shows, position lighting fixtures in a project plan, and configure e:cue and external devices in the control system, in addition to programming special lighting effects, video-to-light pixel mapping, and visualization of the lighting installation, as well as special triggering and automation features.

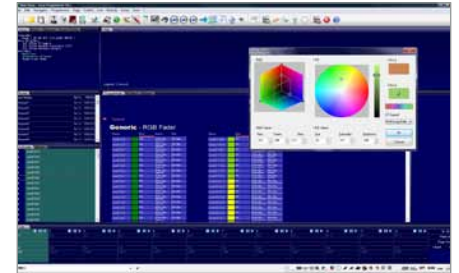
KEY FEATURES

INNOVATION

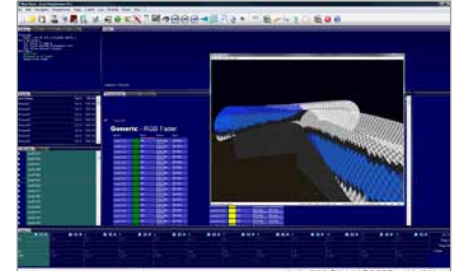
- > Create stunning lighting sequences using the FX Engine
- > Program advanced and interactive automation or triggering
- > Program precision timing lighting scenes
- > Configure 1:1 pixel mapping of video content
- > Preview lighting projects with a Visualizer tool (Imagine)
- > Control lighting shows using an Internet browser
- > Generate automatic e-mail notifications and status reports
- > Intuitively arrange lighting fixtures in your project plan
- > Supports RDM protocol for bidirectional communication

SIMPLICITY

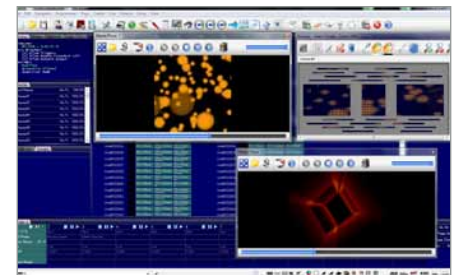
- > Select standard fixtures using the Fixture Library for easy setup
- > Organize and group fixtures
- > Use the same lighting desk features on a PC
- > Use the Color Picker for quick color selection
- > Create animations (chasers, scrolling text, graphic animations, etc.) using Wizards
- > Program time and date triggers
- > Customize Glass Touch User Terminals
- > Use the Sequencer to compose shows with a visual timeline



Color Picker



Preview (DMX/RDM channel control)



Media Player

USER TERMINALS

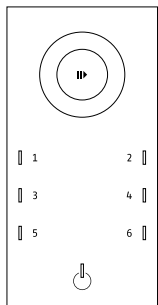
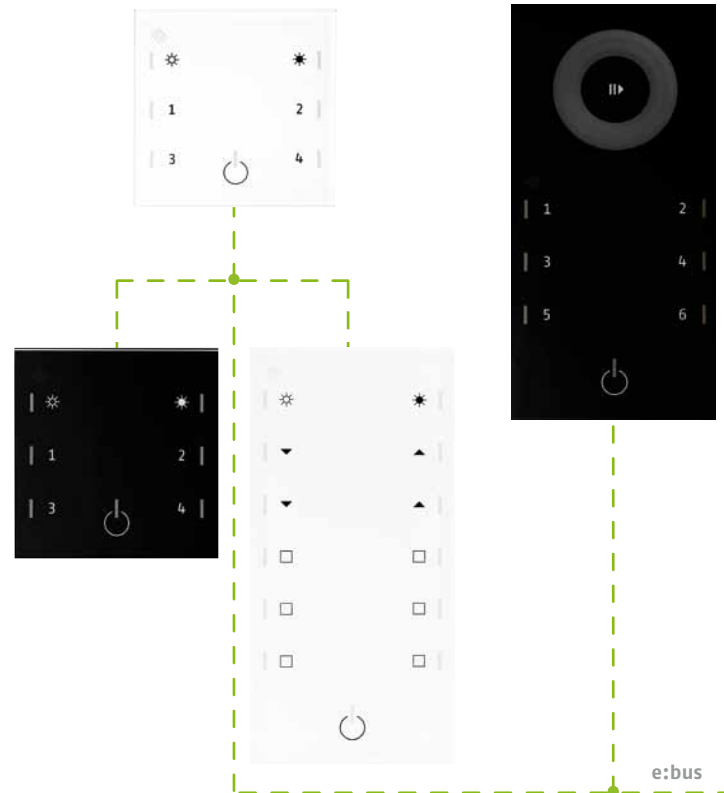
INTERACTION, SELECTION, TRIGGERING, SIMPLIFICATION, USER CONTROL, INPUT, REMOTE CONTROL

GLASS TOUCH SERIES

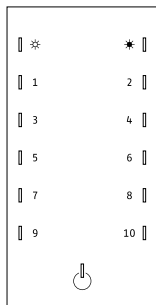
Glass Touches are a series of User Terminals featuring a sleek design with a glass surface as well as touch-sensitive keys and wheel for user interaction. Designed to work with the Butler XT via the e:bus protocol, the Glass Touch keys and wheel are easily customized using the e:cue software to perform any function according to project requirements. Pleasing to the eye, these devices are the perfect solution for user interaction and control in high-end lighting applications such as hospitality, architectural, healthcare, residential, and other projects. Glass Touches are wall mountable, and up to eight units can be connected to a single Butler XT for flexible installation.

KEY FEATURES

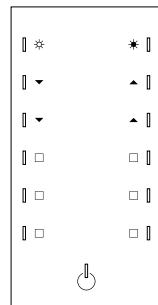
- > Sleek glass surface with modern, elegant design
- > Touch-sensitive keys and wheel
- > Only two wires for power and data (e:bus)
- > Easy set-up and customization
- > Wall mountable, flexible installation
- > Use any topology to connect up to eight Glass Touches



GT T6R XT I

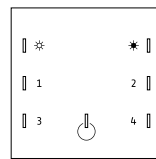


GT T12 XT I

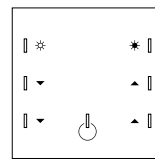


GT T12 System I

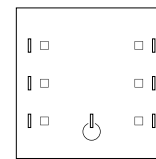
1. CHOOSE TYPE OF GLASS TOUCH.
2. CHOOSE BLACK OR WHITE.
3. CHOOSE ICON IMPRINT.



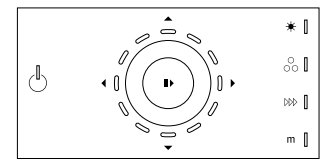
GT T6 XT I



GT T6 System II



GT T6 System III



GT T Wheel System II

INTERFACES

CONVERTERS, SIGNALS, PROTOCOLS, DIMMERS, THIRD-PARTY, INTERPRETERS, TRANSLATORS

VIDEO MICRO CONVERTER

Video Micro Converter (VMC) is a compact device used to convert a DVI signal to DMX or e:pix for LED control of large media screens.

- > Simple video-to-LED solution
- > Highly versatile pixel mapping capabilities
- > Grabs and converts up to 4096 DVI pixels per VMC
- > Internal active DVI signal booster
- > Arrange lighting fixture and set up VMCs using the e:cue software suite



CONNECT EIB/KNX

Used for integration into the e:cue system, Connect EIB/KNX allows interpretation of EIB/KNX protocol to e:cue's protocol (e:net).

- > Easy integration of EIB/KNX within an e:cue control system
- > Control large or small installations triggering e:cue Engines such as LCE, Butler, and Butler XT
- > Integrate from simple buttons to sophisticated sensors

DMX2PWM 3CH & 9CH

DMX2PWM Dimmers are used to control low-voltage LED fixtures by a DMX controller.

- > Control of constant voltage LED fixtures
- > Three or nine individually-controllable channels via DMX
- > Reverse supply protection
- > Daisy-chaining to control multiple DMX and/or PWM-driven LED fixtures

DMX2DALI

DMX2DALI is a simple solution for controlling electrical DALI/DSI ballasts and dimmers using a DMX controller.

- > Control DALI/DSI-driven fixtures using DMX
- > Auto and manual DMX addressing modes
- > Six individually-addressable DALI/DSI outputs for control of up to 96 electrical ballasts (broadcast mode).
- > DMX connection using RJ45 or loose wire

CONNECT BASE 3 & 8

Connect Base 3 or 8 enables connection between e:cue's network and external devices through digital dry contact input and output relays.

- > Simple integration of digital dry contact inputs into an e:cue control system
- > Incorporate external lighting control and automation systems
- > Integrate occupancy lights and other sensors

DMX2CC 6CH & 12CH

DMX2CC enables DMX control of high power LEDs (1W and 3W) using a constant current dimming method.

- > Smooth, flicker-free dimming
- > Pre-selectable LED current between 50mA to 700mA
- > DMX out port to repeat and amplify the DMX signal
- > Self-diagnostic test function
- > DMX auto/manual addressing

EXCITE+

Excite+ allows direct output of up to 512 DMX channels from any PC running the e:cue software suite, using a USB connection.

- > Directly output 512 DMX channels from any PC
- > Integrate external DMX controllers or devices
- > Run up to eight devices on one computer

ENGINES

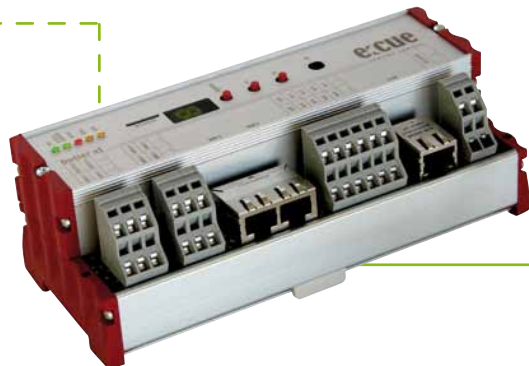
CONTROL, MODULARITY, RELIABILITY, INTELLIGENCE, STORAGE, OUTPUT, POWERFUL, PROCESSING

BUTLER XT

Similar to the Butler but with more connectivity options and RDM capability, the Butler XT is a DMX/RDM engine that can be used in standalone mode to replay and loop previously uploaded lighting shows, programmed using a PC running the e:cue software suite. The Butler XT is also used as a DMX/RDM device controlled by another e:cue Engine. In standalone mode, one DIN-rail mountable Butler XT controls up to 1024 DMX/RDM channels. The DMX/RDM channel control can be increased to 65,536 channels by clustering more Butlers XT. This Engine has many connectivity options used to control the lighting show running on the device. Connectivity options include direct connection to Glass Touch User Terminals, RS232, digital dry contact inputs, and e:cue protocols.

KEY FEATURES

- > Control up to 1024 DMX/RDM channels
- > Supports RDM protocol for bidirectional communication
- > Internal real-time and astronomical clock
- > Easily upload lighting show files via Ethernet
- > Reliable uninterrupted operation
- > Scalable up to 65,536 channels
- > Remote Control via IR receiver



e:net

LIGHTING CONTROL ENGINE

Designed to control large and complex projects, the Lighting Control Engine (LCE) is a high-performance server with the e:cue software suite installed. A central control unit, this versatile lighting control server orchestrates all devices and fixtures within a project. With the ability to output DMX/RDM, e:net, and other protocols such as KiNET and Art-Net, and the capability to integrate various audio/video, external triggering, and other desired devices and content, the LCE is the ultimate solution for the most demanding projects. A built-in touch screen monitor housed on the front panel of the attractive, durable aluminum casing provides user interaction with custom graphic user interface designs. The LCE can be mounted in a 19-inch rack.

KEY FEATURES

- > Built-in touch screen for user control and monitoring
- > Equipped with e:cue's Lighting Application Suite
- > Orchestrates all fixtures, devices, technologies and media within the installation
- > Reliable uninterrupted operation
- > Outputs a variety of Ethernet-based protocols
- > Numerous triggering options
- > Integrate media content
- > Remotely control lighting show via LAN using a web browser
- > Synchronize sound-to-light sequences
- > Control up to 65,536 DMX channels
- > E-mail notifications and status reports
- > Easily mountable in standard 19" control rack



e:net

BUTLER

The Butler is a DMX engine that can be used either in standalone mode to replay and loop previously uploaded lighting shows, programmed using a PC running the e:cue software suite, or as a DMX output device controlled by another e:cue Engine. One compact Butler controls up to 1024 DMX channels. The DMX channel control can be increased to 65,536 channels by clustering more Butlers.

KEY FEATURES

- > Control up to 1024 DMX channels
- > Easily upload lighting show files via Ethernet
- > Reliable uninterrupted operation
- > Scalable up to 65,536 channels
- > Remote Control via IR receiver



e:net

e:net

e:node WM

e:node is a DMX lighting controller with a button station for user interaction. It can be used in standalone mode to replay previously uploaded lighting shows, programmed using a PC running the e:cue software suite or as an interface from e:cue's e:net protocol to DMX512. One e:node controls up to 512 DMX channels, directly controlling DMX-driven lighting installations.

e:node buttons can be programmed to perform specific functions, such as starting or stopping lighting shows, and adjusting color, intensity or speed. Apart from the buttons on the front side, pre-programmed shows can be triggered through eight digital dry contact inputs.

As an interface between the e:net protocol and DMX512, the e:node can be used as part of a larger installation controlled by another e:cue Engine to control certain sections using the buttons on the device.

KEY FEATURES

- > Control up to 512 DMX channels
- > Customize up to 17 buttons for show control
- > Eight digital dry contact inputs
- > LCD for user interaction
- > Internal real-time clock
- > Remote Control via IR receiver



LIGHT-DRIVES

PLUG&PLAY, INTUITIVE, INTERACTIVE, DIRECT, DYNAMIC, SIMPLE, STANDALONE

LIGHT-DRIVE ELITE

Light-Drive Elite is a wall-mounted standalone DMX controller and interactive user interface for dynamic lighting. End-users can easily setup color-changing effects and control lighting directly using the device.

The user interface features touch-sensitive keys and wheel with color LEDs for intuitive selection of colors, and adjustment of intensity and speed. Memory function allows end-users to define four colors for color-changing effects. It can be easily connected to LED RGB fixtures through an RJ45 connection for power and data. Light-Drive Elite's glassy finish is designed for an elegant appearance as well as easy maintenance.

KEY FEATURES

- > User-friendly standalone DMX controller
- > Sleek glass surface with modern, elegant design
- > Touch-sensitive keys and wheel
- > Simple set-up
- > Wall mountable
- > Optional to remote control



CONTACT

e:cue Headquarter

Paderborn, Germany
Tel: +49 5251 180 899-0
pad@ecue.de

Regional Office Europe

The Netherlands
Tel: +31 1029 2741 5
europe@ecue.com

Sales Office Northern Europe

Berkshire, UK
Tel: +44 8701 503 523
uk@ecue.com

Sales Office Western Europe

The Netherlands
Tel: +31 1029 2741 5
europe@ecue.com

Paris, France
Tel: +33 1 4372 9063
france@ecue.com

Sales Office Central Eastern Europe

Köln, Germany
Tel: +49 221 998 830 0
germany@ecue.com

Sales Office Southern Europe

20126 Milano, Italy
Tel: +39 02 4249-1
italy@ecue.com

Regional Office North America

New York, USA
Tel: +1 201 508-1570
north-america@ecue.com

Regional Office Asia Pacific and Middle East

Shatin, Hong Kong
Tel: +852 2943 3437
asia-pacific@ecue.com

Sales Office Asia Pacific

Shatin, Hong Kong
Tel: +852 2943 3437
asia-pacific@ecue.com

Sales Office Japan

Tokyo, Japan
Tel: +81 3 6902 0821
japan@ecue.com

Sales Office Middle East

Dubai, United Arab Emirates
Tel: +9714 8813767
middle-east@ecue.com

Regional Offices South America

OSRAM Colombia

Bogota, Colombia
Tel: +57 1 636 9360
south-america@ecue.com

OSRAM Do Brazil

Osasco, Brazil
Tel: +55 11 3684 7422
south-america@ecue.com